

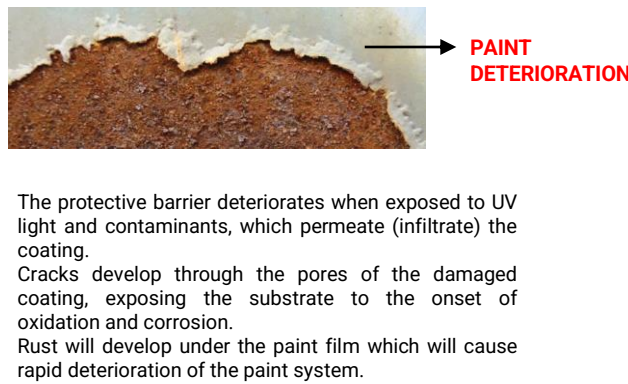
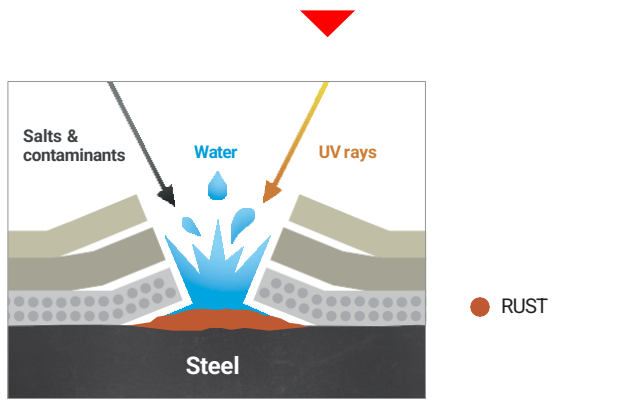
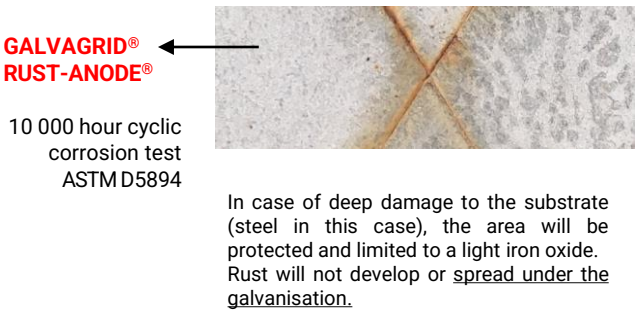
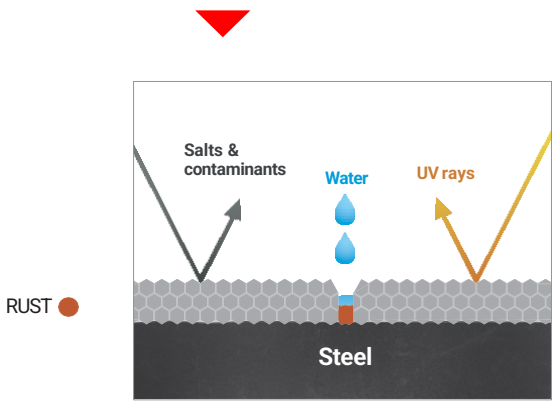
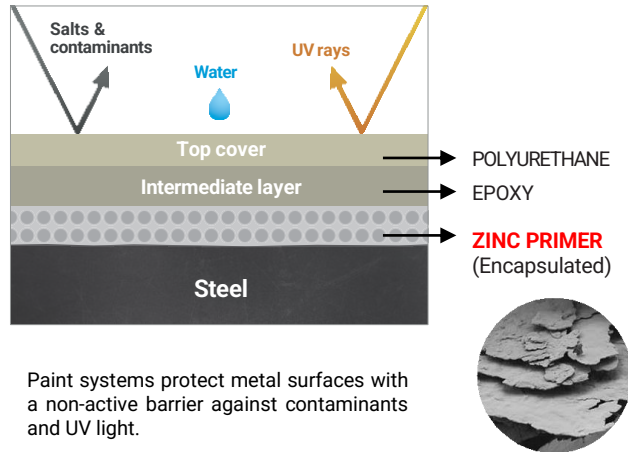
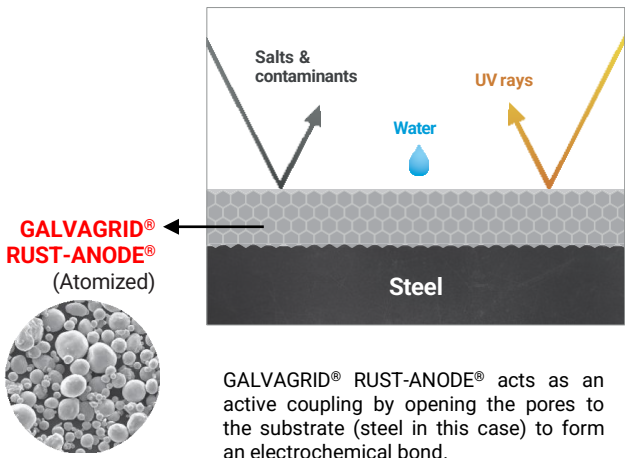
# GALVANIC COATING VS. PAINT : OPERATING PRINCIPLES AND DIFFERENCES



## TECHNOLOGY **GALVAGRID® RUST-ANODE®**

VS

## TRADITIONAL PAINTING SYSTEM



# APPLICATION & MAINTENANCE OF THE COATING



## TECHNOLOGY GALVAGRID® RUST-ANODE®

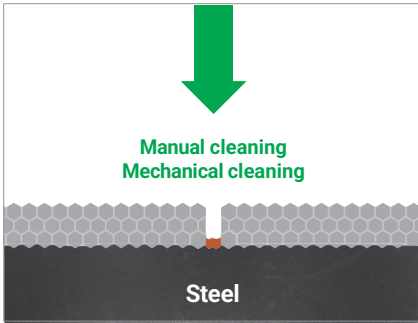
VS

## TRADITIONAL PAINTING SYSTEM

### Surface preparation

#### TO BE REMOVED:

BRITTLE RUST AND  
ZINC OXIDE

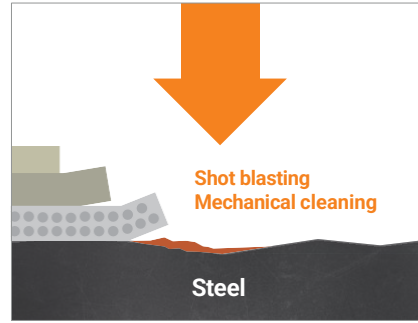


After removing zinc oxide, loose rust and/or corrosion (scale), apply GALVAGRID® RUST-ANODE® directly to the existing galvanised surface.

### Surface preparation

#### TO BE REMOVED:

- POLYURETHANE
- EPOXY
- ZINC PRIMER
- RUST

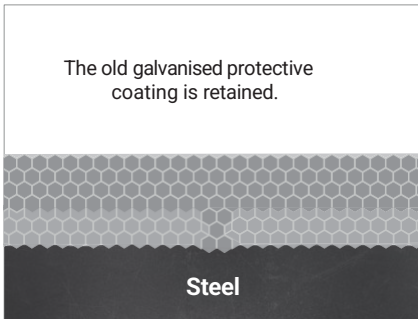


The existing paint layer, as well as any rust, should be removed and returned to sound metal to ensure proper adhesion of the paint system.

### Application

#### 1 NEW LAYER:

GALVAGRID®  
RUST-ANODE®

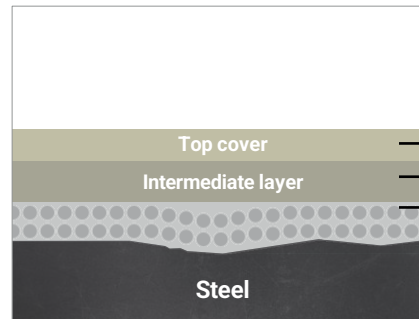


The old galvanisation is recharged, the original service life is restored and the cathodic protection is maintained.

### Application

#### 3 NEW LAYERS:

- POLYURETHANE
- EPOXY
- ZINC PRIMER



A 3-coat system should be applied to achieve a good surface protection barrier.

APPLICATION  
SIMPLE

\$  
LOW COST

\$\$\$  
HIGH COST

COMPLEX  
APPLICATION



a SANERGRID® Group company - 19 Bd, Eugène Deruelle - 69003 LYON - 09 77 19 58 84  
www.sanergid.com - www.technikelec.com - contact@sanergid.com